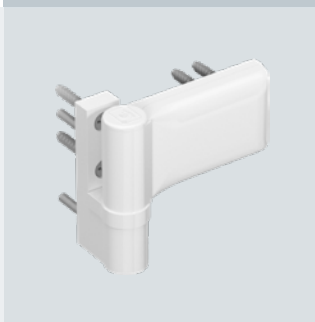
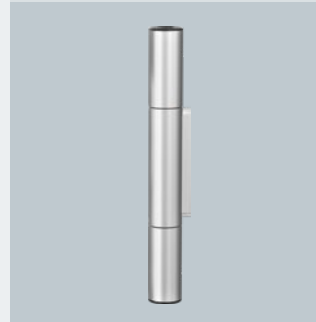
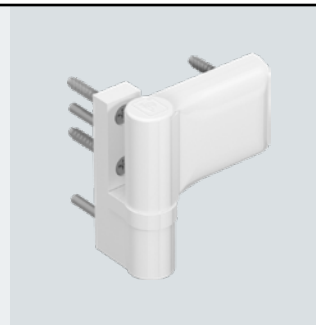




Hahn Produktkatalog

F Catalogue produits

GB Product catalogue





HAHN KLEMMBAND



DESCRIPTION

HAHN-KLEMMBAND – QUICK INSTALLATION WITHOUT ANY DRILLING

These three features make the Hahn Klemmband an easy-to-use product: A divided mounting stone facilitates the installation of the door hinge. The fastening aid integrated in the stone facilitates not only quick installation by one person alone but also allows for mounting the hinge to the installed frame on site. The Hahn Klemmband may be adjusted horizontally and vertically without having to raise or remove the door. The patented toothed bushing, now used in conjunction with clamp hinges for the first time, allows for variable adjustment without having an effect on the sealing pressure.

- Areas of application:
Doors made of aluminium sections, suited for both residential and commercial structures
 - Main entrance doors
 - Side entrance doors
 - Interior doors
 - Exterior doors
 - Entrance doors for flats
- Available for almost every major aluminium section with clamp groove
- Snug fit of all bearing and guide elements
- All assembly components and accessories are included in the scope of delivery



SYSTEM / APPLICATION

- Material: Made of extruded aluminium
- Fastening method: Split clamping plate
- Load capacity: Max. 90 kg depending on profile design
- Adjustability: Without raising or removing the door adjustable in 3 directions:
 - Horizontal adjustment $\pm 1,5$ mm
 - Vertical adjustment + 5 mm
- Usable DIN left / DIN right
- Certifications: CE-certified according to EN1935:2002, hinge class 12
- Colours: Hinges available in anodised colours and RAL colours

The Hahn Klemmband is a system-adapted hinge which was developed in close co-operation with door manufacturers. Different door/frame combinations require special solutions. To help us process your enquiry and order, we require accurate information about the respective door/frame combination to be used.

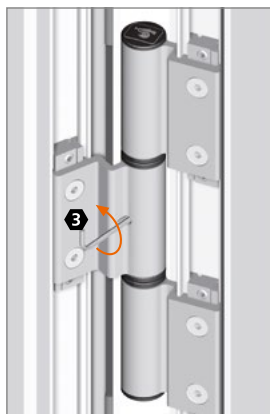


Notice de réglage Adjustment instructions

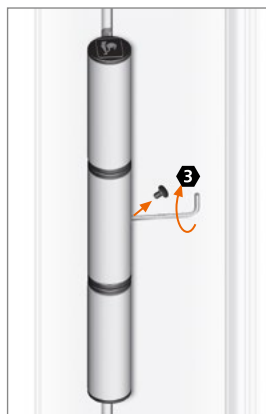


Zur schnellen Montage ohne Bohren · Pour un montage rapide sans perçage · For quick installation without drilling

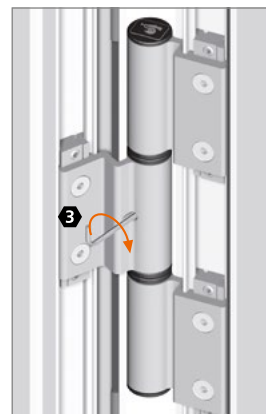
Horizontalverstellung · Réglage horizontal · Horizontal adjustment



Verstellelement lockern.
Débloquez l'élément de réglage.
Loosen adjusting element.

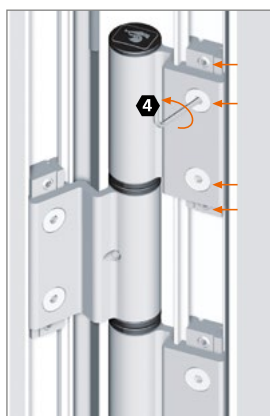


Stopfen herausnehmen.
Horizontalverstellung
 $\pm 1,5$ mm. Stopfen einsetzen.
Enlevez le bouchon. Réglage
horizontal $\pm 1,5$ mm. Replacez
le bouchon.
Remove plug. Horizontal adjust-
ment ± 1.5 mm. Put plug in place.



Verstellelement festsetzen.
Serrez à fond l'élément de
réglage.
Fix adjusting element firmly.

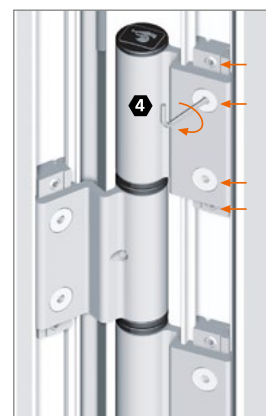
Höhenverstellung · Réglage vertical · Height adjustment



Alle Befestigungsschrauben
der oberen Rahmenbandteile
lockern.
Desserrez toutes les vis des bras
dormants supérieures.
Loosen all fastening screws of
the upper frame hinge parts.



Abdeckkappe abnehmen.
Höhenverstellung + 5 mm.
Abdeckkappe aufstecken.
Enlevez le capuchon.
Réglage vertical + 5 mm.
Posez les capuchons.
Remove cap. Height adjustment
+ 5 mm. Snap on cap.



Alle Befestigungsschrauben
der oberen Rahmenbandteile
festsetzen.
Resserrez toutes les vis des bras
dormants supérieures.
Fix all fastening screws of the
upper frame hinge parts.



Lagerbuchse aus wartungsfreiem Kunststoff – keinesfalls schmieren!

Douille en matière plastique ne requérant aucun entretien – ne graisser en aucun cas !

Bearing bushings made of maintenance-free PVC – do not lubricate!



Hahn Serie 60 AT



Hahn KT-EV



Hahn VL-Band ST



Hahn Rollenband G



Hahn KT-RV



*Für jede
Situation
die passende
Lösung*



Hahn KT-V 6R



Hahn VL-Band 180



Hahn Rollenband NG



Hahn KT-RN



Hahn Türband 4 AT



Hahn KT-Rollenband NL



Hahn KT-SV



Hahn KT-B 6R



Hahn Türband 4 AT



Hahn KT-N 6R



Hahn Türband 4 HM0



Hahn KT-RKN



Hahn KT-RV



Hahn KT-EN



Hahn Rollenband AT



Hahn Serie 60 AT



Hahn VL-Band AT



Hahn Klemmband



Hahn KT-RKV



Hahn Klemmband



Hahn AT-G



Hahn KT-RN

 **Dr. Hahn**[®]
TÜRBÄNDER. MADE IN GERMANY.



Dr. Hahn GmbH & Co. KG

Trompeterallee 162 – 170 · D-41189 Mönchengladbach
Postfach 400109 · D-41181 Mönchengladbach
Phone +49(0)2166 954-3 · E-Mail: sales@dr-hahn.com
www.dr-hahn.eu